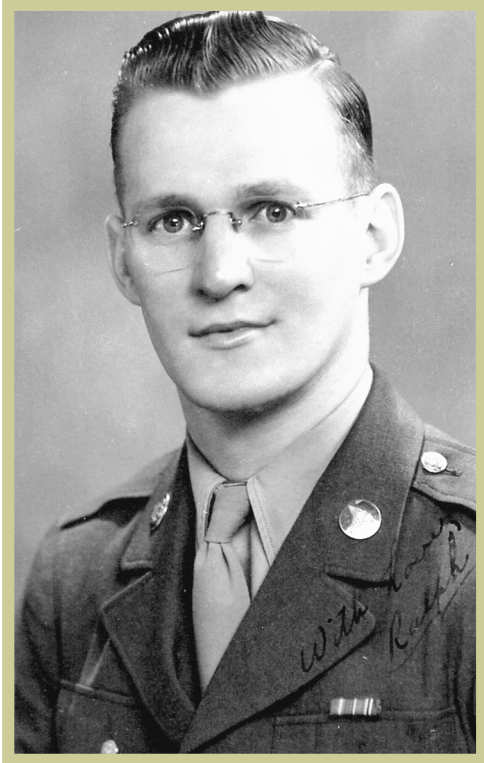


Ralph V. Boyd

U.S. Army

Ralph V. Boyd



Port Head Quarters, 15th Mobil T. C.

I was inducted into service on January 25, 1943 at Scott Field, Illinois. From there I was sent to Camp Grant, Illinois where I took medical training. After basic, I was sent to Charleston, South Carolina where I joined a Port-Head Quarters, 15th Mobil T. C. This was a section of the Army that had every branch of the service, which in turn made sure the material reached our men. I was in Liverpool, England and we worked the docks there where the Liberty Ships came in from the USA. At times, there were so many ships that came in that each man in our section had as many as six or seven ships at one.

Quite often, the Navy would let us stay aboard ship for a few days so that it would save time from going back to camp. When I went overseas, it was the largest convoy to cross the Atlantic. I found

was the largest convoy to cross the Atlantic. I found out a year or so ago that my friend Lou Delaby was in the same convoy. We landed in Glasgow, Scotland and then on to Liverpool.

It doesn't seem as if we really did that much at the time, but there were 27 miles of docks that we took care of. Just before we left Liverpool and went to France, a memorial was dedicated to the 15th Port Mobil T. C. for our dedicated duty to the war effort. I had the pleasure of seeing this just a couple of years ago when Gerry and I visited her nephew who was working in England.

After we got to Le Havre, France, we took over the operations of the railroad station. At the end of the war, we received many American prisoners of war and sent them to camps to prepare them for the trip home. This is where I ran into a cousin of mine, Melvin Boyd. He had just been released from a prison camp. I served three years and 3 days and achieved the rank of Sergeant. I received One Service Stripe, Four Overseas Service Bars, the European African Middle Eastern Ribbon, the Good Conduct, and the WW II Victory Medal.

Ralph V. Boyd
Auburn, Illinois